



# Finlandia Foundation®

Spring 2012  
<http://www.finlandiafoundation.org>

## OVER \$80,000 DONATED BY COLE ESTATE

By Trent Blackburn, Seattle Lodge

Leonard and Rauha Cole were longtime members of the the Seattle Lodge and the Theosophical Society in America (TSA). The TSA encourages the study of science, philosophy, and comparative religion. Both were deep thinkers, widely read, and compassionate. They also participated in the peace movement in Berkeley, California. Mrs. Cole was born in Finland, and was proud of her national heritage, as a result. She maintained membership status in the Finlandia Foundation National as a way of keeping in touch with her homeland.

Rauha left Finland as a teenager to accept work as a nanny in South America. From there she moved to the US where she met Leonard through her friend Aino Kunz who was also from Finland. Leonard and Rauha married in 1955 and joined the TSA in 1957. Leonard was treasurer of the Seattle Lodge for ten years until 1963, when they moved to California. Leonard was employed by the University of California at Berkeley, retiring from his position as chief internal auditor in 1981.

In 2004, the Coles moved back to Seattle, Washington, to be nearer their lifelong friends, the late John Kunz and Aino Kunz. By that time, Leonard was diagnosed with Parkinson's disease, which made it very difficult for him to attend lodge meetings. Rauha, his beloved wife, consort, and companion, chose to remain at his side rather than attend meetings without him.

Both Leonard and Rauha faced significant medical challenges in their final years and endured them with courage, grace, and quiet acceptance. They were widely loved and revered by those fortunate enough to cross paths with them as they set splendid examples of Theosophy in action in the way they led their lives.

## NEW EERO and HELLI TETRI FUND

By Ossi Rahkonen, Trustee

Finlandia Foundation National (FFN) is pleased to announce the receipt of a generous gift from Mr. Eero Tetri of Seattle, WA. FFN has established the Eero and Helli Tetri Fund, and Mr Tetri has inaugurated this fund with a \$25,000 gift this year. To provide sustained support for FFN, he has generously agreed to give \$25,000 to this fund every year through 2016.

Eero and Helli Tetri immigrated from Jyväskylä to the US in 1957 and have been active with the Finnish communities in WA and AK. Mr. Tetri speaks of his gratitude to the US for providing him and his late wife with a warm welcome and abundant opportunities. This gift to FFN, as well as his support of the Finnish language program at the University of Washington, is an outgrowth of this gratitude. It is his hope that these gifts will be instrumental in promoting Finnish-American cultural exchange through music, language, education and other activities.

*Continued on page 3*



## SOIVA INTERNATIONAL MUSIC CAMP 2012 delivers significant Finnish-based instruction

By Dennis Anderson, Trustee

American music students, ages 11-17 with a minimum of three years of experience, are invited take advantage of the world-renowned Finnish educational system. Finlandia Foundation National is partnering with Concordia College in Moorhead, Minnesota, to offer the 2012 Soiva International Music Camp from June 17-24. Lessons are offered in piano, violin, flute, clarinet, and composition. All campers also gain valuable experience in improvisation. Both teachers and students will be coming from Finland to join their American colleagues for this auspicious event!

Thanks to recent grants, a special tuition price of \$600 is available right now! This includes housing and meals on campus, all instruction, and the opportunity to utilize every one of the amenities of a great music school with 36 practice rooms, 30 studios, a computer lab, a recording studio, and a performance hall that has the capability to web cast performances to friends and relatives over the internet.

The following excerpt from the parent of a 2009 Soiva camper attests to the high quality of this camp:

*"I burst with awe! and pride hearing them play...at the final Soiva Recital... The Finnish music teachers were clearly world-class musicians...and yet they were down to earth...willing to share their expertise with students, my children. Collaborating, teaching and performing showed...a raised learning 'ceiling'...how much better music could be. This was the best musical opportunity my children have experienced."*

Consider supporting a child or grandchild with a significant experience of Soiva International Music Camp. For scholarship information and an application please email [soivaatcord@yahoo.com](mailto:soivaatcord@yahoo.com). More details, including a video from previous Soiva camps, are posted on the Finlandia Foundation National web site at [www.finlandiafoundation.org](http://www.finlandiafoundation.org).

# PRESIDENT'S MESSAGE

Dear Friends,

You have in your hands another issue full of exciting news and developments from Finlandia Foundation National. We continue to grow as new chapters become affiliated, bringing our chapter count to 42. Welcome to the Finnish Farmers Club of Monson, ME; Frederick Forward of Frederick, SD; and the Red Lodge Knights and Ladies of Kaleva of Red Lodge, MT. To describe a typical chapter would be difficult except for the common interest in celebrating the Finnish culture and heritage. Innovation and volunteerism give rise to some unique ways of celebrating—typified, for example, by the hilarity of St. Urho's Day celebrations.

On the cultural side, the celebration of Kalevala Day is included on the yearly program of many organizations, all with a varying theme. We like to hear how our chapters are drawing and inspiring members to contribute their time and talents. As you read about this year's grant recipients, it's not too early to give some thought to individuals, groups, and chapters who might be considered for an award in 2013. Inspiring the pursuit of innovative ideas can result in a project which might otherwise be abandoned due to lack of funds. Similarly, if you know scholars who might not be familiar with the FFN scholarship program, steer them to the FFN website for guidelines on applying.

Sadly, the scholarships offered by FFN for young people to attend Salolampi Language Village and Soiva Music Camp go begging for applicants. Scholarships are available for chapters that match the FFN scholarship amount. Six such scholarships were available this year with only four applicants. Also, funding has been made available for students attending Soiva Music Camp, an innovative, unique camp dedicated to teaching music with a Finnish thrust. Students and instructors from Finland interact with American students and teachers. The setting this year for this camp for students between the ages of 11 and 17 is Concordia College in Moorhead, Minnesota. We want to encourage our young people to savor their Finnish heritage, and sending students to Salolampi and Soiva Music Camp is an ideal way to do this. Further information about any of the aforementioned programs is available on the FFN website, [www.finlandiafoundation.org](http://www.finlandiafoundation.org).

All of these programs are made possible through the generosity of those who understand the value of carrying Finnish-Americana into future generations. We at Finlandia Foundation National remain focused on the vision of Consul Yrjo Paloheimo and friends as they sat in the Paloheimo sauna in Pasadena and decided to form what is now Finlandia Foundation National to offer assistance to students and other scholars. That vision was increased to include musicians, artists, engineers, and doctors from Finland to study in the U.S. and Americans to study in Finland. We, as Finlandia Foundation members, need to feel the responsibility to carry on that vision.

The generosity of many will help us push towards the goal set for us almost 60 years ago. There are numerous ways to contribute, outlined in this newsletter. A charitable gift through a will or trust is a simple and powerful way to make an impact, as was done through recent bequests through the Cole and Koski estates. The establishment of the Eero and Helli Tetri Fund, with sustaining support over a 5-year period, will have a significant impact on future funding. We are deeply indebted to those who have placed their faith in the charitable work of Finlandia Foundation National. As we approach the 60<sup>th</sup> anniversary of FFN in April, 2013, we keep our sights on the goals set so many years ago by Finnish visionaries in that sauna in Pasadena. We hope that you will join us in celebrating by helping to build on that vision.

Finland beckons again as I make plans to travel with my 18<sup>th</sup> tour group to Finland. With those pleasant thoughts, I send best wishes to all for a relaxing summer.

Anita Smiley, President

# NATIONAL TRUSTEES

## PRESIDENT

Anita Häkkinen Smiley  
smileys.place@juno.com  
Preston, CT

Satu Mikkola  
SatuM@aol.com  
Poulsbo, WA

## VICE PRESIDENT

Paul Halme  
POHHC@aol.com  
Solvang, CA

Peter Mäkilä  
PeterMakila@bellsouth.net  
Lake Worth, FL

## TREASURER

Anne-Mari Paster  
ampaster@rcn.com  
Lexington, MA

Armi Koskinen Nelson  
armi@mninter.net  
Edina, MN

## SECRETARY

Jacqueline Harjula  
jackielee207@gmail.com  
Thomaston, ME

Ossi Rahkonen  
ossifinland@aol.com  
Mc Lean, VA

Jon Saari  
jsaari@nmu.edu  
Marquette, MI

Richard Ahola  
rahola@stny.rr.com  
Dundee, NY

Tarja Silverman  
tarja.silverman@formin.fi  
Greystone, NY

Dennis M. Anderson  
dmanymin@yahoo.com  
Rochester, MN

Paul Suomala  
paulsuomala@gmail.com  
Dilworth, MN

Janet Kniffin  
jekinct@aol.com  
Simsbury, CT

George Sundquist  
GeorgeSund2@aol.com  
Redwood City, CA

Mervi Hjelmroos-Koski  
mervih@att.net  
Lafayette, CO

Päivi Anneli Tetri  
paivi.tetri@gmail.com  
St. Louis, MO

## MISSION

Our mission is to sustain both Finnish-American culture in the USA and the ancestral tie with Finland by raising funds for grants and scholarships, initiating innovative national programs, and networking with local chapters.

Be a friend of **FINLANDIA**  
**FOUNDATION NATIONAL**  
On Facebook:

[http://www.facebook.com/  
Finlandia.Foundation.National](http://www.facebook.com/Finlandia.Foundation.National)

If you would like to receive this newsletter as a PDF by e-mail only, let us know by emailing [office@finlandiafoundation.org](mailto:office@finlandiafoundation.org).

**NEWSLETTER:** The Finlandia Foundation National newsletter is a production of the FFN Communications Committee--Jacqueline Harjula, Chair, Armi Koskinen Nelson, Mervi Hjelmroos-Koski and Satu Mikkola. Editing, Computer Production and Distribution--Christina Lin, Executive Assistant. Mailing address: P.O. Box 92298, Pasadena, CA 91109-2298. Phone: (626) 795-2081. Email: [office@finlandiafoundation.org](mailto:office@finlandiafoundation.org).

# INTRODUCING NEW TRUSTEES

**JANET ARVONEN KNIFFIN**, a 30-year veteran in the nonprofit and public sectors, is the Chief Development Officer of Connecticut Food Bank where she leads the agency in developing and implementing ongoing strategies to expand funding, community and public relations, special events and volunteer efforts. Kniffin also plays a critical role in raising the public's awareness of the problems of poverty and food insecurity in Connecticut and the nation. Kniffin previously worked eleven years as a senior executive with the Girl Scouts. She has also worked in executive management for various human services and health organizations as well as serving for eight years with

the Permanent Commission on the Status of Women of the Connecticut General Assembly. In addition to a proven record of accomplishment in fundraising and communications, Kniffin has extensive experience in board governance and strategic planning.

The granddaughter of four Finnish immigrants, Kniffin grew up in eastern Connecticut within a strong Finnish-American subculture. Her grandparents and parents were active with the Sampo Hall in Canterbury, Connecticut - now the home of the Finnish American Heritage Society (FAHS) where she currently volunteers on the FAHS newsletter team.



**Janet Arvonen Kniffin**

**TARJA SILVERMAN** was born in Helsinki, Finland, and has lived most of her life in New York City. She has a Master's degree in Art Administration from New York University and has worked at the Consulate General of Finland in New York for the last 15 years. She is currently President of the Finlandia Foundation New York Metropolitan Chapter and has been a board member since 2002. Prior to that, she was a board member of the American Scandinavian Society and the

Finnish American Women's Network (FAWN). Visual art is close to her heart, and that is why she curated a number of art exhibits of mostly Finnish artists in New York and had her own exhibition of four Finnish artists in the Hampton Art Fair in Bridgehampton, Long Island, in the summer of 2011. She has three children with dual Finnish-American citizenship, and her goal is to keep the rich Finnish cultural heritage alive.



**Tarja Silverman**

**PAUL A. SUOMALA** has Finnish roots in Wolf Lake, Minnesota, where he was born and raised on a family-owned dairy farm. His family spoke Finnish at home.

His paternal grandparents immigrated to the Wolf Lake in central Minnesota from Kalajoki and Teuva, Finland, in the 1890's. His maternal grandfather immigrated from Alaharma, Finland (grandmother from Sweden), also in the 1890's. They built a home (Iso Aho) featured in *The Opposite of Cold*, depicting Finnish homes and saunas in the United States.

Mr. Suomala graduated from Frazee (MN) High School and attended the University of Minnesota, majoring in animal industry and economics. His first employment after college was with Cargill, Inc., where he served as a territory manager in the feed division. He was then employed as a manager of feed manufacturing facilities for eleven

years, during which time he founded EMPRO Corporation. EMPRO, headquartered in Perham, MN, and later the Twin Cities, was a construction materials wholesaler serving seven states. He was with EMPRO for the next 14 years. In Moorhead, Minnesota, Mr. Suomala served as the Executive Director of The International Coalition (now the Red River Basin Commission) until his retirement.

Mr. Suomala's volunteer work includes serving a term as President of the Minnesota Finnish-American Historical Society. He is currently treasurer of the Red River Finns and has coordinated and prepared Finnish food for the annual Hjemkomst Scandinavian Festival for 18 years. Mr. Suomala has been a member of Rotary, International, for 42 years.

Mr. Suomala and his wife Dorothy have four children and six grandchildren.



**Paul A. Suomala**

## EERO and HELLI TETRI FUND

*Continued from cover*

In 2013, Finlandia Foundation National will celebrate its 60<sup>th</sup> anniversary as the largest non-governmental source of information and education about Finnish-American culture in the United States. In 2011, FFN provided more than \$100,000 for 22 scholarships, 38 grants, Lecturer of the Year and Performer of the Year programs, and the Soiva Music and Salolampi Language Camps. Looking ahead, FFN is aware that scholarship and grant programs are able to fund only a fraction of the well-qualified applicants without additional support.

**Mr. Tetri has been invited to become a member of the FFN President's Council**, a key advisory board supporting our fundraising efforts. FFN is grateful to Mr. Tetri and all of its friends who support our efforts to promote awareness of Finnish-American culture in the United States. FFN welcomes all financial support and gifts of time to support this common goal!





By Saana McDaniel  
Scholarship Committee Member

**2012 SCHOLARSHIP COMMITTEE:**  
Edith Eash, Chair; Maurice Eash, Jacqueline Harjula, Erja Kajosallo, Sirkku Konttinen, and Saana McDaniel.

**ZOE BARTHOLOMEW**, a US citizen, is studying Art History and Scandinavia Studies at the University of Minnesota with a 3.66 GPA. She has a true passion for the Finnish folk art as well as the modern work of Finnish artists. In order to dig deeper in her research, she started to study the Finnish language. Her Finnish Professor, Daniel Karvonen, writes: “Zoe is exactly the kind of student that may eventually become a leader in the Finnish-American community and thus help promote the mission of Finlandia Foundation.”

**EEVA CALDARA**, a US and Finnish citizen, is a second year nursing student at Clemson University. She maintains a 3.8 GPA, while she continues to impress her professors with her maturity and interpersonal skills. As Professor Schvaneveldt notes: “This combination of diligence, intelligence, and personableness will serve her well in her chosen profession or nursing.”

**REBEKAH EFTHIMIOU**, a US and Finnish citizen, is in her third year pursuing a Bachelors of Music degree at Oberlin Conservatory of Music with a concentration in harp performance. She has a 3.48 GPA, and her plan is to build a career in harp performance and teaching. Rebekah’s family has deep roots in the Finger Lakes Finnish community.

# 20 SCHOLARSHIPS AWARDED

**MATTI ERPESTAD**, a dual citizen of Finland and US, is currently enrolled in the Master of Environmental Education Program at the University of Minnesota Duluth. His passion in environmental education has taken him to Finland where he studied at North Karelian College in Niittylahti. He is going to research the differences in motivation and social impact of students majoring in environmental education between the two institutions. His fluency in both Finnish and English will be a huge benefit. Professor Gilbertson writes: “Matti is a superb student who holds exemplary attributes and academic skills.”

**NIKLAS FOLKE**, a dual citizen of Finland and US, graduated from Wenatchee Valley College with a GPA of 3.75 and is now continuing his studies in mining engineering at Montana Tech. Niklas completed his Finnish military service in June 2011. Professor Conrad writes: “I believe that Mr. Folke will be a great engineer and an asset to the mining industry.”

**IRENE HALMARI**, a dual citizen of Finland and US, is a full-time graduate student at Nova Southeastern University where she is enrolled in the Physician Assistant program, and will earn a Masters of Medical Science degree in August 2014. Professor Athas writes: “Her commitment to excellence is surpassed only by her high ethical standards and compassionate disposition.” In addition, Professor Tapper notes: “Perhaps due to her bi-cultural upbringing (Finnish and US), Irene is arguably the most mature, professional,

non-judgmental, open-minded, and genuinely well-balanced young person that I have met in many years.”

**OLLI HIRVONEN**, a Finnish citizen and a graduate of Sibelius Academy, is enrolled in a Masters program in the Manhattan School of Music where he is studying jazz guitar with a 3.902 GPA. Olli is a highly awarded young musician, who was named Pori Jazz Festival Artist of the Year 2011 among other things. Professor Jones writes: “He is one of the very best of his generation playing jazz guitar today.”

**IRENE KETONEN**, a Finnish citizen, is pursuing a PhD at SUNY University of Buffalo in the Department of Anthropology. Her dissertation project investigates the social practices related to European Union agricultural subsidies in Northern Ireland. Her thesis advisor, Professor Reed-Danahay, writes: “She is a serious, mature, and intelligent person. I count her among the top graduate students I have mentored during my career.”

**CLAIRE KETURI**, a US citizen, is attending the University of Texas at Austin where she is enrolled in the Department of Natural Sciences. She has currently a 3.428 GPA. Professor Camp writes: “Claire’s hard working and creative nature reflect a strong character.”

**JONATHAN KILPELA**, a US citizen, is in his third year studying Biological Sciences and Secondary Education at Michigan Technological University. He has a 3.94 GPA and spent a rewarding semester in Oulu University in the spring of 2011, where he



Zoe Bartholomew



Rebekah Efthimiou



Matti Erpestad



Niklas Folke



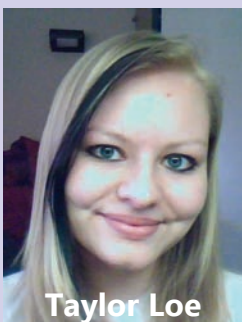
Irene Halmari



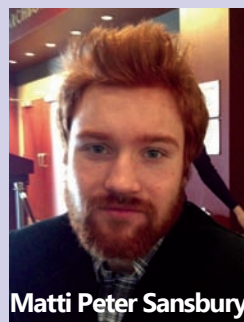
Heli Korzhukov



Otto Lehtonen



Taylor Loe



Matti Peter Sansbury

Applications for Finlandia Foundation National scholarships including letters of recommendation and transcripts must be postmarked by **FEBRUARY 1, 2013**. For more details and the application go to: [finlandiafoundation.org](http://finlandiafoundation.org)

# D TO TALENTED STUDENTS

was able to re-establish his deep Finnish roots. Professor Meyer writes: "Jonathan is a man of few words, but it is clear that he is both a very capable student and a "good citizen" in terms of supporting the learning of all his classmates."

**EMILY KINNUNEN**, a US citizen, is studying Music Education at Indiana University Jacobs School of Music with a 3.063 GPA. Her primary instrument is the French horn. She has performed a number of times at the Finlandia Foundation, Pittsburgh Chapter. Professor Glaser comments: "She possesses that rare combination of talent, intelligence and personality that produces exceptional citizens."

**HELI KORZHUKOV**, a Finnish citizen, has earned 60 credit hours at Collin County Community College with a 3.65 GPA. She is in a process of transferring over to University of Texas at Dallas where she will complete her Bachelor's degree in Global Business.

**OTTO LEHTONEN**, a Finnish citizen, is pursuing his Associate degree in Psychology at Indian River State College with a 3.75 GPA. He is a student-athlete who is on a competitive diving team. Professor Loehr writes: "He is mature and enjoys learning and he is committed to obtaining a quality education."

**TAYLOR LOE**, a US citizen, is a student at the University of Washington, double majoring in biochemistry and the Finnish language with a 3.79 GPA. She will be attending the University of Turku for the fall

semester 2012. Professor Lambers writes: "Taylor is hard working, quick (she picks up concepts rapidly), organized and utterly reliable."

**MIKKO POLLARI**, a Finnish citizen, is working on his PhD dissertation "Socialism of Harmony" at the University of Tampere. He will be a visiting scholar at the University of Chicago during the summer and fall semesters in 2012, working closely with Professor Tara Zahra. The aim is for him to broaden his understanding of transnational and migration history. His thesis advisor, Professor Sulkunen comments: "A research period in US would make an essential addition to Pollari's dissertation by linking his study to the wider phenomenon of mass migration from East to West at the turn of the 20<sup>th</sup> century. In addition, it would help him to gain access to archive materials not available in Finland."

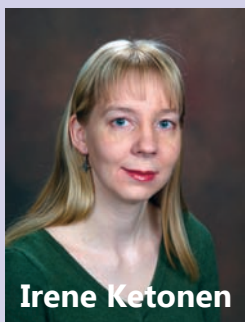
**TAPANI SAARINEN**, a Finnish citizen, is working on his PhD in Religious Studies and Politics at the Catholic University of America with a 3.500 GPA. Professor Root writes: "Mr. Saarinen is an excellent student, with a strong interest in the interrelations among religion, conflict and peace."

**MATTI PETER SANSBURY**, a US citizen, is a junior at the Syracuse University, College of Visual and Performing Arts where he is majoring in Acting and minoring in Writing with a 3.240 GPA. Matti's family has been a long-time member of the Finlandia Foundation New York Metro Chapter. Professor Clark writes: "Peter has the kind of talent, dedication, and motivation that should insure his success in the theatre."

**JAAKOV SCHULMAN**, a dual citizen of Finland and US, is a sophomore at the Trinity College of Arts and Sciences at Duke University with a 3.74 GPA. He is majoring in Political Science and eventually hopes to work in the field of international relations. Jaakov is a well-rounded young man who is very active with a number of student organizations on campus. Professor Sussex writes: "Jaakov is an exceptional person and student...He has an excellent academic record and brings a comprehensive and enthusiastic appreciation of Finnish culture to the United States and to Duke University especially."

**SAMI SIVEN**, a dual citizen of Finland and US, is enrolled in the Miller School of Medicine at the University of Miami where he is working towards his Doctorate in Physical Therapy. Professor Roach writes: "He is bright, inquisitive, articulate and very proud of his Finn Heritage...He stood out as one of the best students in a class of very academically strong individuals and his grades in his other courses were equally outstanding." He carries a 3.925 GPA.

**SARA WERTANEN**, a dual citizen of Finland and US, is currently attending Lake Sumter Community College, but is in the process of transferring to the University of Oregon in the fall of 2012. She will major in Environmental Science and have a minor in Scandinavian Studies. Professor Campbell writes: "Ms Sara Wertanen clearly ranks in the upper 2% of all the students who have passed through my class in my years of teaching at the college level and she has my highest recommendation as both a scholar and a business leader worthy of any financial support with a scholarship award."



Irene Ketonen



Claire Keturi



Jonathan Kilpela



Emily Kinnunen



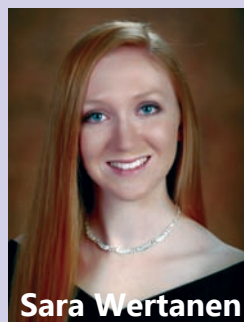
Tapani Saarinen



Jaakov Schulman



Sami Siven



Sara Wertanen



Olli Hirvonen





## FREDERICK FORWARD Celebrates Their Community's Finnish Heritage Every Midsummer

By Heidi Marttila-Losure, Frederick Forward President 2012-13

Frederick had a very successful quasiquintennial celebration in 2007, and when a newly formed community development group called Frederick Forward decided they wanted to have a summer festival each year to draw people to the community, they drew upon Frederick's Finnish heritage as a theme. (The town was named after Kustaa "Frederick" Bergstadius, a railway clerk in charge of immigration and settlement to the area, and many Finns settled there in the 1880s.)

Putting on a Finnish festival was not an easy task for Frederick. While Frederick still had a number of Finnish last names, the link to Finnish culture had been nearly severed. Apparently the *sisu* was still passed down, however, as group members first educated themselves about Finnish culture, and then passed on what they learned to the community and the region during the festival. In 2008 they started with a *juhannuskokko* (bonfire), a wife-carrying contest, and a little *mojakka* stew. Each year thereafter they added a little more Finnish flavor: Finnish musicians, Finnish gifts, an art show based on a Finnish theme, and a program booklet that explained aspects of Finnish culture. Last year the festival was featured in South Dakota magazine and on South Dakota Public Broadcasting's "Dakota Digest." (The wife-carrying contest received a great description on the radio—search online for "Finn Fest SDPB" to read the transcript.)

This year they are pleased to have the all-school reunion, which happens every five years, held in conjunction with Finn Fest. The crowds will be big, and Frederick Forward is once again looking forward to a good party—this time with Finnish flair.

## FINNISH CENTER ASSOCIATION CELEBRATES 45 Years

By Markku Ketola, FCA member

The Finnish Center Association celebrated its 45<sup>th</sup> birthday last year by having a *Juhannus* Celebration and a picnic during the summer, a Kantele Concert in the fall, and a Finnish Independence Day Celebration in December.

The Finnish Center Association was formed in 1966, and the Cultural Center was opened in 1974. What has made the last 45 years possible is the volunteers who have donated hundreds and even thousands of hours of their time.

It is the volunteers who have made it possible for the Finnish Center Association to promote and preserve our Finnish and Finnish-American culture through such things as: Finnish language classes and Finnish conversation groups, weaving, folk dancing, music and singing, cooking and baking, drama club, gardening club, book club, *Nikkarin talo*/wood shop, the gift shop, and the many programs, celebrations, and concerts held at the Cultural Center.

As we say kiitos, K-I-I-T-O-S to our volunteers, we must remember also our future. The future brings the FCA even greater challenges, but we can overcome those challenges with our volunteers and *SISU*.



Watching the bonfire: A crowd gathered to watch the *juhannuskokko* during Finn Fest in Frederick, South Dakota. Photo by Heidi Marttila-Losure.



Finnish Farmers Club in Monson, Maine. Photo by Donald P. Higgins. Story on page 11.



The Finnish Center of Farmington Hills, Michigan. Photo by David Sharpe.



## PERFORMER OF THE YEAR 2013

### **Finlandia Foundation National (FFN)**

welcomes nominations for the  
2013 Performer of the Year.

The due date for nominations and  
submission of all materials is  
**September 15, 2012.**

The POY 2013 term is a full calendar year  
starting on January 1, 2013.

The POY Guideline Summary and instructions  
for the applications are listed on the FFN  
website: **www.finlandiafoundation.org**

The POY Travel Grant is \$7,000 to cover  
the POY's travel expenses as stated  
in the POY Guidelines Summary  
for performances within the United States.

For further information, contact Satu Mikkola,  
POY Coordinator, at **satum@aol.com**

## Two Lecturers of the Year Available in 2012

By Jon Saari, Trustee and LOY Coordinator

The 2012 Lecturer of the Year, Glenda Dawn Goss, began her term with a very successful presentation before the Boston chapter in March. Anne-Mari Paster commented that the new LOY gave a very high-quality talk. "We think we know so much about Sibelius, but this presentation was unique and gave a totally new perspective. It was not only educational, but enlightening in every way."

Because Dr. Goss splits her time between Finland (where she teaches at the Sibelius Academy) and the United States, she is not always available for LOY presentations. She will be in the U.S. until the end of May, and then again for a six-month period (November 2012 through April 2013).

For two months when Glenda Goss is not available, i.e. September-October 2012, chapters will be able to get an early booking of the 2013 Lecturer of the Year, Yvonne Lockwood. Recently retired from the position of Curator of Folklife at Michigan State University, Dr. Lockwood has had a long career exploring the material culture of Finnish Americans, focusing particularly on rag rugs, food ways, and the sauna. She pulled her reflections together in a 2010 book entitled *Finnish American Rag Rugs: Art, Tradition, and Ethnic Continuity*.

So please take note of the different dates that each LOY is available, and plan accordingly.

- Glenda Goss, the Sibelius scholar: May, 2012, November, 2012 through April, 2013
- Yvonne Lockwood, the rag rug-food ways-sauna scholar: September-October 2012, and the calendar year 2013.

Contact Jon Saari, the LOY Coordinator, at [jsaari@nmu.edu](mailto:jsaari@nmu.edu) to explore availability.

## WELCOME FINNISH FARMERS CLUB

By Ethel (Kurki) and Donald Higgins, Finnish Farmers Club members

The Finnish Farmers Club formed in 1935, when Finnish families in Monson, Maine, decided to preserve their cultural heritage in a formal organization, sometimes referred to as the Monson Finnish Club. The earliest documented evidence of the club is a deed from the inhabitants of the Town of Monson to the trustees of the Finnish Farmers Club dated August 1938. The local Kotimiiki brothers, Eino and Sulo, made gifts of land to the club in September 1940.

The Club was very active until WWII. After the war, many younger families moved to other parts of New England for better employment opportunities, and by then older members had passed on. By 1979, the Finn Hall needed funds to pay for property tax liens. Fundraising efforts through many dances, suppers, raffles, events and yard sales rehabilitated the Club. Improvement to the building also benefited from a Finlandia Foundation National grant and members who have since moved away have donated \$29,000 in the last eight years to keep the Club alive.

The Club has actively sponsored performances by groups from Finland (Soittovat Sarat, Myllarit) and held festivals promoting Finnish culture (foods, dance and folk music primarily). Accordionist Veikko Honkala has generously played music to benefit The Club. Currently the Club has its own "house" orchestra, "Woodsong" (Metsalaulu) with members who have a profound interest in Finnish folk music, while none are of Finnish descent!

The primary mission of the Finnish Farmers Club is the preservation and promotion of Finnish folk music and dancing with the fellowship of a country dance hall replete with coffee and pulla and an occasional potluck supper. Attendance at dances averages forty to fifty adults and a half dozen or so children. All are introduced to Finnish polkas, schottisches, waltzes as well as Raattikko and Kerensky.

Photo on page 9.

## SCHOLARSHIPS FOR SALOLAMPI

By Mervi-Hjelmroos-Koski, Trustee

Since 2006, Finlandia Foundation National has supported the local chapter participation by covering approximately one-half of the one-week tuition for one camper, giving a priority for first-time campers. The scholarship is granted when the local chapter provides a matching or larger scholarship. The number of individual scholarships varies annually. This is a unique opportunity for our young people to learn the Finnish language and heritage in an authentic environment.

Finnish language is one of the 15 languages in the Concordia program; it is also one of the six cultures that has an authentic village on Turtle Lake. Each summer approximately 150 young people enroll in the program representing 20 to 25 states. The Finlandia Foundation National is awarding scholarships to the following campers for the summer of 2012: Sofia Laskorski, age 11, from Finlandia Foundation – Boston, Inc.; Kim Mustonen, age 16 and Justin Wier, age 14 of the FF Florida Chapter; and Kolson Kytta, age 8, of the FF Copper Country Chapter.

# Five FFN Trustees Decorated By the Government Finland

In March 2012, Finlandia Foundation National Executive Vice President, **Paul O. Halme**, was awarded Commander of the Order of the Lion of Finland, which is the 3<sup>rd</sup> highest honor and is rarely awarded to a non-resident of Finland.

Halme was born in Los Angeles, California, to Finnish immigrant parents, the late Rev. Omar G. and Saimi K. Halme. Rev. Halme was one of the founders of Finlandia Foundation National. Paul has been an attorney since 1967. Early military postings took Paul and his wife, Susan, to Alabama and London, England, where Paul served three years as a USAF Captain (JAG). Additionally, Paul sat on the Ballard (County, California) and Santa Ynez Valley (SYV) Union High School boards, worked with SYV and Cottage Hospital Foundations, and served as president of the (Danish) Elverhøj Museum of Solvang, California. He founded the SYV Bar Association, formed the law firm of Halme and Clark, and in 2003 was named *Man of the Year* by the Valley Foundation. Just recently, on April 29, 2012, Halme was the commencement speaker and received an honorary Doctor of Humane Letters degree from Finlandia University.

Top left photo: His Excellency, Pekka Lintu, Ambassador of Finland to the United States, presented **Ossi Rahkonen**, Trustee, with the Knight of the Order of Lion of Finland at the Embassy of Finland in Washington, D.C. on June 14, 2009.

Top right photo: The President of Finland awarded the insignia of the Knight of the Order of the Lion of Finland to **Satu Mikkola**,

Trustee. Her Excellency, Ritva Koukku-Ronde, Ambassador of Finland to the United States, presented the award in a decoration ceremony at the Columbia Tower Club in Seattle, Washington, on November 11, 2011.



Bottom left photo: The Honorable, Erkki Huittinen, Consul General of Finland from Los Angeles, presented **Rita Vermala-Koski**, Trustee Emerita, with the Insignia and Diploma Knight of the Order of the Lion of Finland on January 30, 2002. Left to right: granddaughter Katherine Redfern, daughter Taina Redfern, Rita Vermala-Koski, granddaughter Natasha Parker, and daughter Randi Parker.

Bottom right photo: His Excellency, Pekka Lintu, Ambassador of Finland to the United States, presented the Cross of Merit of the Order of White Rose of Finland to **Marianne Parssinen**, Trustee Emerita, at the Embassy of Finland in Washington, D.C. on May 27, 2009.

The Order of the White Rose of Finland was established by Gustaf Mannerheim in 1919. The name comes from the nine roses argent in the coat of arms of Finland. The Order of the Lion of Finland was founded in 1942 in an effort to preserve the prestige of the Order of the White Rose of Finland, which could have been diminished if granted too frequently, and to facilitate the awarding of honors including both civilian and military merit. Both awards are given to those who are wholly dedicated to promoting Finland.



Commander of the Order of the Lion of Finland awarded to Paul O. Halme. Jose Villa photo/ Inside the Santa Ynez Valley Magazine.



## RETIRING TRUSTEE



Trustee Emerita Rita Vermala-Koski with Finlandia Foundation patron Esa-Pekka Salonen after a concert in Seattle, Washington, in 2006. Photo by Mervi Hjelmroos-Koski.

### Finnish Expatriate Parliament (FEP)

“ - cooperative forum and promoter of interests for all Finns living abroad.”

Welcomes organizations to participate in its 7<sup>th</sup> session at the University of Helsinki on October 26-27, 2012.

All Finnish expatriate associations can participate in the FEP. New member associations are welcome to join and attend the session by ratifying the FEP bylaws. The information and ratification forms are available on the FEP web site: [www.USP.fi](http://www.USP.fi). Every member organization that has ratified the by-laws of the FEP is entitled to send a representative to the parliament.

#### Initiatives:

Each member organization is entitled to submit initiatives to the parliamentary session. The **deadline for the initiatives is July 26, 2012.**

#### Schedule of the Session:

July 26	Deadline for registration and the submission of initiatives
September 14	Names of the participants to be submitted to the secretariat of <a href="http://Suomi-Seura.fi">Suomi-Seura.fi</a>
September 26	Summary of initiatives; the agenda is mailed to participants

#### Regional meeting:

October 25	USA and Latin America
------------	-----------------------

#### Additional events:

October 25	Three seminars on expatriate issues: Senior issues, expatriates as a global business promotion network and multicultural marriages
------------	--

For additional information, please contact Marita Cauthen, Deputy Speaker of the Region USA and Latin America: [raivaaja@net1plus.com](mailto:raivaaja@net1plus.com) or Satu Mikkola, Alternate Deputy Speaker: [satum@aol.com](mailto:satum@aol.com)

#### RITA VERMALA-KOSKI

After almost twenty years of dedicated service to the Finlandia Foundation National, Trustee Vermala-Koski is retiring from the board. Among many other involvements, she has been instrumental in the scholarships, grants, POY and nominating committees. The photo of her with Esa-Pekka Salonen was well deserved as she arranged for the Foundation and its chapter representatives to have a chance to meet him after a performance at the Seattle Symphony Orchestra in Seattle, Washington, in May of 2006.

Vermala-Koski was born in Helsinki to a Russian father and a Finnish mother. Her family immigrated to Canada in 1947, to Chicago, Illinois, in 1963, and to Seattle, Washington, in 1981. Her study of languages and horticulture

led to a career as a travel consultant. Vermala-Koski owned and managed a travel agency for 32 years and brought many Finnish performing groups to the United States and arranged travel for American performing groups to Finland. She has been involved with Finnish community affairs wherever she has lived. Organizations that she has contributed to include: The Finnish Lutheran Church, Nordic Festival Committee, Finlandia Foundation-Seattle chapter, The Finnish-American Chamber of Commerce of the Northwest as President, Board member of the Finnish School of Seattle, Northwest Ethnic Council, FinnFest USA, Children's Hospital Guild Association, Nordic Heritage Museum, and finally Trustee of the Finlandia Foundation National. Rita Vermala-Koski was named Knight, Order of the Lion of Finland.

### WHY WE SERVE

that heritage to other Americans with little or no connection to Finland was important to me personally.

If you are considering service on the FFN board, I would highly recommend it. It will give you a new view of your heritage. It becomes a marvelous chance to carry that torch forward so that others can experience the richness and depth of Finnish culture. Finally, you will gain a better understanding of another country's path in a complex world that may be in contrast with a more familiar path yet still one worth exploring.

**JOHN LAINE:** I was fortunate to have had the opportunity to serve on the Finlandia Foundation National Board of Trustees for 20 years in various capacities. All of us who have served and continue to serve hold our own Finnish heritage in high regard. In a way, our service provides us with the opportunity to be a torchbearer for future generations and to provide support for those who work to keep Finnish culture vibrant and transforming.

As a third generation American, my views differ from those with closer contact generationally. Working to bring

**RITA VERMALA-KOSKI:** I was invited to serve on the Finlandia Foundation National (FFN) board over 20 years ago. Here was my opportunity to volunteer in the planning, facilitating, and implementing of the fine projects offered by this important organization. My passion for the preservation of Finnish culture and heritage in the USA could make a difference.

I accepted the invitation. So began a most rewarding association with FFN. To have been a part of projects that focus on supporting Finnish and Finnish-American culture, heritage and technology has been most energizing and rewarding. Through these years, I have served with the best of the best of dedicated, talented, and generous

individuals. Positivity guides these fine women and men, from every corner of this country, who offer their time for the benefit of an efficient FFN. I have witnessed growth in FFN programs and finances. Our project funding has increased as have the number of chapters. There is, however, always room for continuous growth in both areas.

If volunteering is about donating time, energy, and skills, I have had that good fortune; and in giving, I have received. As I retire from serving FFN and continue my journey along other paths, I look back with pride and gratitude at having been given the opportunity to be a part of this incredibly effective organization.

## MAJOR GIFTS

Rauha Cole  
Curtin-Paloheimo  
Charitable Trust  
Aina Swan Cutler  
Eero Tetri  
Haikala Associates  
Ronald A. Helin  
Hilda M. Hendrickson Trust  
Dr. Vaino Hoover  
Aune E. Koski  
Gertrude Kujala  
John and Nancy Laine  
Pertti Lindfors  
John and Pauline Kiltinen  
Earl I. Mack Foundation  
Jean Sainio-Nolan Trust  
Paloheimo Foundation  
Leonora C. Paloheimo  
Elma Randall Estate  
Ossi and Karin Rahkonen  
Bert and Marjatta Salonen  
George and Marion Sundquist  
U.F.B. and S. Lodge #1 of SF  
Fund for Scholars  
Regina K. Valley  
June M. Wepsala

## \$5,000 to \$9,999

Rita Vermala-Koski and  
Alvar Koski  
Satu and Jussi Mikkola  
Jon Saari  
Anita and Jack Smiley  
Paivi Tetri

## \$2,000 to \$4,999

Richard Ahola  
Paul Halme  
Jacqueline L. Harjula  
Mervi Hjelmroos-Koski and  
John Koski  
Peter Mäkila  
Armi Koskinen Nelson  
Anne-Mari Paster  
Duane and Cheryl Rogers,  
Raili and Miranda  
Susan Walima

## \$1,000 to \$1,999

Dennis Anderson and  
Madeline Bahr  
Richard and Lois Lindgren  
Millennium Pharmaceuticals

## \$500 to \$999

Donald Leethem  
Andrew Luhtanen  
Odd Ryden

## \$200 to \$499

Arthur Axelrad  
Kaisa Dolan  
Tor and Chris Haggblom  
Faith Johnson  
Alan Listemaa  
Ray and Anja Miller  
Ivy E. Nevala  
Robert D. Thorson

## \$100 to \$199

Michael and Elaine Anuta  
Ted and Nancy Benttinen  
Elana Brink  
Joseph and Patricia Clement  
Heidi Crooks  
Patti Folsom  
Laila Frank  
Adele Idestrom  
Carl R. Inkala  
Albert Jokela  
Stanley Krahn  
David Kumpula  
Christina Lin  
Yvonne and William Lockwood  
Nicholas and Brenda Monaco  
William and Lisa Nam  
Timothy Nurvala  
Richard Ploe-Kaijala  
John and Joy Pratt  
Mark and Susan Suokas  
Leslie Tervo  
Brent Thompson

## UP to \$99

Susan Ahl  
Jack Aho  
Arnold R. Alanen  
Louis R. Amundsen  
Robert Anderson  
Steven Autila  
Kari and Riitta Autio  
Mauri and Laila Auvinen  
Robert and Norma Belden  
Joan Wennstrom Bennett  
Donald and Marjorie Blevins  
John and Aila Bolton  
Wayne and Carole Brown  
Erick Buck  
Elaine Burnham  
Arthur Butler  
Andy and Virginia Carlson  
James and Mary Ann Chellman

Matti Cirigliano  
Alpo Crane  
Tim and Janice Cribley  
Ira A. Ebeling  
Beverly Ellis  
David Erkkila  
Oscar and Sally Forsman  
Anni R. Forsman  
Mimmi Fulmer  
Enrique and Nancy Garcia  
Joyce Giblin  
Michael Glass  
Marian Karvonen  
Sol Greenspan and  
Pamela Lintula  
Bea Gudmundson  
Walfred Haanpaa  
Leona Lampi Hassen  
June Haugen  
Anna-Liisa Heckman  
Dorothy Hedrick  
Helen Heino  
Clair and Mary Hekhuis  
Davis Helberg  
Linda Henriksen  
John Hirsimaki  
Charlotte Holmes  
Gordon Holt  
Leo E. Hovi  
Maija Hulkkonen  
Greg Jacob  
Jaak Juhansoo  
Charles and Betty Jylha  
Vesa Kaartinen and  
Leena Haataja  
Peter and Sharon Kachmar  
Ronald Karjala  
Alvar Kauti  
Paul and Barbara Kelsey  
John and Pauline Kiltinen  
Martti Kinnunen  
Mary Knapp  
Janet Kniffin  
Helvi Koivunen  
William Kokko  
Kalevi and Ritva Korpi  
Ruth Kotila  
Stan and Jeanne Krahn  
Pentti and Silja Lahtinen  
Daryl and Bill Laitila  
Frans and Angie Laulainen  
Sharon Laulainen  
Michael and Kerttu Lavallee  
Richard Leppanen  
Jim and Virpi Loomis  
Carla Lyon  
Charlotte Lytikainen  
Jason and Katja Maravelias  
David and Taimi Marean  
Reijo and Maria Makela  
Bob Maki

Eleanor Maki  
Jeanne Martin  
Edward and Nancy Mattila  
Wayne Mikkola  
Lyyli Nelson  
Kenneth and Martta Niemi  
Marjatta Nisenson  
Kelly O'Connor  
Gary and Carol Oja  
Anthony and Judith Olson  
Nancy Olson  
Matti and Lisa Paavola  
Johanna Padie  
Arvid and Marianne Parssinen  
Robert J. Pemberton  
Mary Putonen  
Vesa Pylkkanen  
Urho and Pamela Rahkola  
Paul and Nancy Rajala  
Eva Risnel  
Chuck Routhe and  
Vergene Ollila-Routhe  
Vernon and Diana Ruuska  
George Saari  
Dirk and Pirjo Schulbach  
Elaine Stevens  
Emily Stewart  
John and Gundula Sundgren  
The Finnish Center at  
Saima Park Inc.  
Amy Tervola-Hultberg  
Allan and Linda Tuomaala  
Dennis Usitalo  
Karen Vance  
Terttu Voskressensky  
K. Marianne Wargelin  
Marlissa Westerfield  
Richard and Mary Westhoff  
Aira Williams  
Laila Williamson  
Violet Winsor  
Helena Katriina Zorndorf

The donation amounts listed include cumulative and recent donations.

**FFN is grateful for countless gifts in-kind.**

IF THERE IS AN ERROR please e-mail Treasurer Anne-Mari Paster ([ampaster@rcn.com](mailto:ampaster@rcn.com)).

Finlandia Foundation National is a US non-profit organization recognized by the Internal Revenue Service as tax-exempt and designated a public charity under Section 501(c)(3) of the IRS codes.

The main objective of the Finlandia Foundation National (FFN) is to support Finnish and Finnish-American culture. It does this by providing grants and scholarships and by supporting special programs, such as Lecturer and Performer of the Year, Salolampi Finnish Language Camp and Soiva Music Camp. All of these are high-quality programs; recipients are described elsewhere in this newsletter. This year more than \$115,000 has been awarded in support of these programs.

**Finlandia Foundation, with its 42 chapters, is therefore by far the most important organization in support of Finnish-American culture.** Our main disadvantage is that FFN does not have sufficient funds to support all well-qualified applicants; it is able to fund only a fraction of these applicants. With additional funds, we could significantly expand these programs. Fundraising therefore becomes a critical factor in meeting these needs.

Finlandia Foundation is fortunate that the Paloheimo Foundation matches all donations up to an annual total of \$100,000. Finlandia Foundation is a 501(c)(3) non-profit organization. Therefore, not only is your donation matched dollar to dollar, but it is fully tax deductible for you. In addition, **all donations are fully allocated to support these programs**, since FFN's administrative costs and overhead are separately funded. Your tax-free donation is fully matched and goes without deductions to support grant programs. This is truly a very attractive deal.

There are many ways to give:

- **Make your gift online at:** [www.finlandiafoundation.org](http://www.finlandiafoundation.org)
- **Become a Monthly Donor:** sign up to have your gift automatically debited from your account every month
- **Give a Gift of Stock:** Contact our attorney, Paul Halme, FFN Trustee, to learn more: [POHHC@aol.com](mailto:POHHC@aol.com)
- **Make a planned gift:** Contact Paul Halme at [POHHC@aol.com](mailto:POHHC@aol.com)
- **Join The President's Council,** the FFN Leadership Program. To find out more, contact Ossi Rahkonen, FFN Trustee at [ossir98425@aol.com](mailto:ossir98425@aol.com)

**Note:** You may have other matching programs available, which can be used to further enhance the dollar-for-dollar FFN/Paloheimo matching.

Please consider making a tax-deductible contribution to support FFN. Use the envelope attached to this newsletter for sending your gift today! Finnish-American culture and traditions, combined with Finnish heritage, are too rich and valuable to be lost. **FFN will continue to inspire and strengthen the Finnish-American community in the U.S. and cultural ties with Finland for years to come.**

Sincerely Yours,

Ossi Rahkonen, Trustee

**Finlandia Foundation National gratefully acknowledges the awarding of a €600 media grant from Suomi-Seura/Finland Society.**

By Susan E. Walima, Ph.D.

Susan Walima created the Walima Fund for Folk Music in honor of her parents, Adolph A. and Grace A. Walima. Born in Minnesota to musical families, they met at the Finn Hall in Minneapolis. As a child, Susan remembers her parents taking her to the Minneapolis Finn Hall. She watched them dance to polkas and schottisches while the crowd parted to give them the floor. Her father told her to just stand on his feet, hold on to him, and this is how she learned to dance to folk and country music! To this day, she loves these memories and loves to dance. Hearing her father play the harmonica (he was self-taught) was a special treat, and when later she learned to read music and play the violin, her parents gave her a songbook of Finnish music. Her favorite song was "Renki Jussi" (Farmer Johnny).

Her mother's family had singers who gathered around a piano and sang together. Her family still sings in harmony "by ear." Her younger brother, Brian, taught himself to play the harmonica and guitar.

Walima is proud to honor her parents and the great traditions of folk music through the Finlandia Foundation. She even did her Ph.D. dissertation fieldwork with Samppa Uimonen, the "last of the rune singers," - the Kalevala and kantele music. The Finlandia Foundation brought him to California with a grant and he did nine performances in ten days. SISU!!! The latest contribution to the Walima Fund for Folk Music was helped by folk musician, Aaron A. Walima, Susan's brother Brian's oldest son.

## FFN's LENDING LIBRARY

The following items are available for loan from the FFN office in Pasadena (for a complete list contact [office@finlandiafoundation.org](mailto:office@finlandiafoundation.org))

CDs from POYs and DVDs from LOYs

### DVDs:

Sibelius  
Fire & Ice  
Letters from Karelia  
Mother of Mine  
Otto Heino: A Way With Clay  
Otto Heino: A True Potter  
Finland Phenomenon

*Kalevala Tuohitorvi Soi!*  
Produced by Evergreen School of Performing Art;  
Directed by Helina Pakola

### BOOKS:

*The Helsinki Chronicles of Dr. Louise C. Love and Mr. P.: Six Adventures in Finland's Capital*  
By Arthur M. Alexander

*The Legacy of Ida Lillbroända: Finnish Emigrant to America 1893*

*"An insightful analysis of a Swedish-speaking woman and of her adjustment within a multitude of different settings in the American West."*  
By Arlene Sundquist Empie

*Sibelius: A Composer's Life and the Awakening of Finland*  
By Glenda Dawn Goss

By Bernhard Hillila:  
*The Finnish Line*  
*Cutting Edge*  
*The Sauna Is: Reheated and Revised*

*The Lapp King's Daughter: A Family's Journey Through Finland's Wars*  
By Stina Katchadourian

The second edition of FFN's history, *Black Ties and Miners' Boots: Inventing Finnish-American Philanthropy, A History of Finlandia Foundation National 1953-2010* by Jon L. Saari, is available for \$19.95 (California residents also pay 9.25% sales tax). All new members receive a free copy: email [office@finlandiafoundation.org](mailto:office@finlandiafoundation.org) or call (626) 795-2081.

# Finlandia Foundation® National

Newsletter

P.O. Box 92298

Pasadena, CA 91109-2298

<http://www.finlandiafoundation.org>

Non-Profit Org.  
U.S. Postage  
**PAID**  
Los Angeles, CA  
Permit No. 4848

## Finlandia Foundation® National Chapters/Presidents

### ARIZONA

**The Finnish-American Club of Tucson** - 2007

Joel Wasti - [jhwasti@finns.org](mailto:jhwasti@finns.org)

**Finns and Friends of Phoenix** - 2010

Hannele Waissi - [mhannele@hotmail.com](mailto:mhannele@hotmail.com)

### CALIFORNIA

**FF/Los Angeles Chapter** - 1974

Ellen Harju - [harju@ucla.edu](mailto:harju@ucla.edu)

**Finnish-American Home Association** - 2005

Kari Autio - [kautio@sbcglobal.net](mailto:kautio@sbcglobal.net)

**FF/San Francisco Bay Area Chapter** - 1956

George Sundquist - [GeorgeSund2@aol.com](mailto:GeorgeSund2@aol.com)

**Finlandia Club of Sacramento** - 2006

Heli Hatanpaa-Wetzel - [helihw@sbcglobal.net](mailto:helihw@sbcglobal.net)

### COLORADO

**FF/Colorado Chapter** - 1993

Juha Mäkikalli - [jmakikalli@comcast.net](mailto:jmakikalli@comcast.net)

### CONNECTICUT

**Finnish American Heritage Society** - 2011

Stan Karro - [swkbrklyn@aol.com](mailto:swkbrklyn@aol.com)

### DISTRICT OF COLUMBIA

**FF/National Capital Chapter** - 1960

Leila Takala - [leilatak@verizon.net](mailto:leilatak@verizon.net)

### FLORIDA

**FF/Florida Chapter** - 1954

Kaarina Langeland -

[plangeland@bellsouth.net](mailto:plangeland@bellsouth.net)

### GEORGIA

**Atlanta Finland Society, Inc.** - 1975

Katriina Naukkarinen -

[katriina.naukkarinen@comcast.net](mailto:katriina.naukkarinen@comcast.net)

### ILLINOIS

**Finnish-American Society of the Midwest** - 1997

Oscar Forsman - [OForsman@yahoo.com](mailto:OForsman@yahoo.com)

### MAINE

**Finnish Heritage House** - 2007

Jacqueline Harjula -

[jackielee207@gmail.com](mailto:jackielee207@gmail.com)

**Finnish Farmers Club** - 2012

Inez Goodine - [Donaldp.Higgins@gmail.com](mailto:Donaldp.Higgins@gmail.com)

### MARYLAND

**FF/Baltimore Area Chapter** - 1974

Merja Laakso - [merjalaakso@hotmail.com](mailto:merjalaakso@hotmail.com)

### MASSACHUSETTS

**FF/Boston, Inc.** - 1955

Teresia Moller - [jtmoller@gmail.com](mailto:jtmoller@gmail.com)

**The Finnish Center at Saima Park, Inc.** -

2005

Maija Mård - [Mailis1@aol.com](mailto:Mailis1@aol.com)

**The Finnish Heritage Society - Sovittaja**

- 2006

Barry Heiniluoma - [fhss@sovittaja.org](mailto:fhss@sovittaja.org)

### MICHIGAN

**Finnish Center Association** - 2004

Cortland Book - [fcacenter@sbcglobal.net](mailto:fcacenter@sbcglobal.net)

**Finnish Theme Committee of Hancock -**

**FF Copper Country Chapter** - 2006

James Kurtti - [jkurtti@chartermi.net](mailto:jkurtti@chartermi.net)

Becky Hoekstra -

[mommabecca@hotmail.com](mailto:mommabecca@hotmail.com)

### MICHIGAN continued

**Upper Peninsula Chapter of the League of Finnish-American Societies** - 2006

Ron J. Hill - [ronjhil38@aol.com](mailto:ronjhil38@aol.com)

**Finnish-American Society of West Central Michigan** - 2007

Kay Ollila - [K2ollil@aol.com](mailto:K2ollil@aol.com)

### MINNESOTA

**Finnish-Americans and Friends (Hibbing Chapter)** - 1998

Wes Kutsi - [wesleykutsi@yahoo.com](mailto:wesleykutsi@yahoo.com)

**FF/Twin Cities Chapter** - 1993

Betsey Norgard - [norgard@winternet.com](mailto:norgard@winternet.com)

**FF Northland Chapter** - 2010

Tracey Gibbens - [ballade@q.com](mailto:ballade@q.com)

**Red River Finns** - 2011

Ellen Liddle - [ellen.liddle@yahoo.com](mailto:ellen.liddle@yahoo.com)

### MONTANA

**Finn Club of Helena** - 2007

Marjorie Peura Reilly - [marj@jeffb.net](mailto:marj@jeffb.net)

**Red Lodge Knights and Ladies of Kaleva** - 2011

Pat Wallila - [wallilaranch@yahoo.com](mailto:wallilaranch@yahoo.com)

### NEW YORK

**FF/New York Metropolitan Chapter** - 1954

Tarja Silverman -

[tarjasilverman@finlandiafoundationny.org](mailto:tarjasilverman@finlandiafoundationny.org)

**Finger Lakes Finns** - 2006

Lisa Koski - [rkoski@zoom-dsl.com](mailto:rkoski@zoom-dsl.com)

### OHIO

**Finnish-American Heritage Association of Ashtabula County** - 2004

Elsa Shephard - [ellishepard@yahoo.com](mailto:ellishepard@yahoo.com)

### OREGON

**FF/Columbia-Pacific Chapter** - 2001

Seppo Saarinen -

[seppo.saarinen@comcast.net](mailto:seppo.saarinen@comcast.net)

### PENNSYLVANIA

**FF/Pittsburgh Chapter** - 1990

Seija Cohen - [SeijaC@aol.com](mailto:SeijaC@aol.com)

**Finnish-American Society of Delaware Valley** - 2006

Jukka Kervinen -

[jukkakervinen@comcast.net](mailto:jukkakervinen@comcast.net)

### SOUTH DAKOTA

**Frederick Forward - FF Dakota Chapter** 2012

Heidi Marttila-Losure -

[hmmartti@yahoo.com](mailto:hmmartti@yahoo.com)

### TEXAS

**Finnish-American Soc. of Dallas/Fort Worth** - 1991

Jeremy Martin - [president@texfinn.org](mailto:president@texfinn.org)

### VIRGINIA

**FF/Tidewater Virginia Chapter** - 1978

Riikka Mohorn - [riikkamohorn@verizon.net](mailto:riikkamohorn@verizon.net)

### WASHINGTON

**FF/Seattle Chapter** - 1968

Gary London - [garylondon@gmail.com](mailto:garylondon@gmail.com)

**FF/Inland Northwest Chapter** - 1970

Don Heikkila - [idfinn@sm-email.com](mailto:idfinn@sm-email.com)

**Swedish-Finn Historical Society** - 1991

Dick Erickson - [twoswed@comcast.net](mailto:twoswed@comcast.net)

**FF Suomi Chapter** - 2010

Tapio Holma - [tapiok@comcast.net](mailto:tapiok@comcast.net)

**Finnish-American Folk Festival** - 2011

Mike Swanson - [swanson@wwest.net](mailto:swanson@wwest.net)